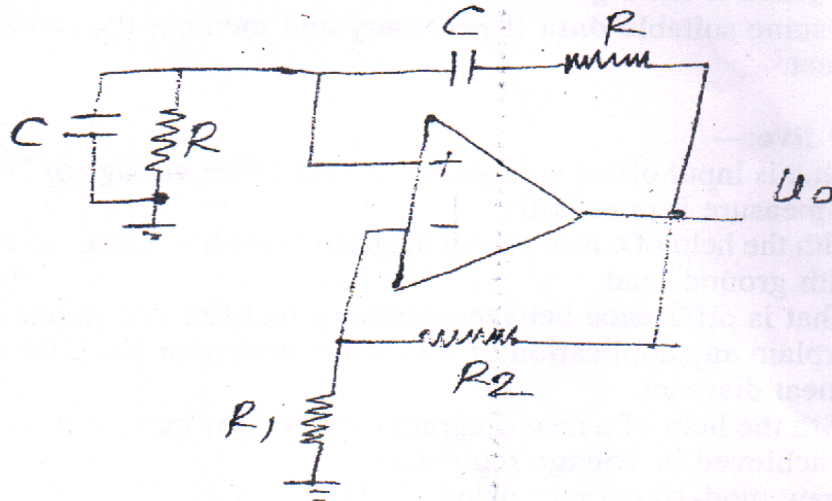


- (c) Identify the circuit shown below and explain its working.

4



5. (a) Draw the circuit diagram for an Excess-3 decade counter using IC74163 and explain its working with the help of waveforms. 10
 (b) With the help of a neat circuit diagram explain the working of universal shift register IC 74194. 10
6. Write short notes on any four:— 20
 (i) Phase Locked Loop IC565
 (ii) Precision rectifier.
 (iii) Schmitt trigger.
 (iv) Sample & Hold circuit.
 (v) Window detector.