

A

Project Report

On

**“ANALYSIS OF VARIOUS MAXIMUM POWER
TRACKING ALGORITHM FOR SOLAR PV”**

Submitted in partial fulfilment of the requirements

of the degree of

Bachelor of Engineering in Electrical Engineering

Submitted by

Khan Mohammed Saif(15EE19)

Yadav Avdheshkumar(15EE52)

Shaikh Shafiqurrahman(15EE45)

Ansari Rabi(15EE03)

Under the guidance of

Prof. SYED KALEEM

DEPARTMENT OF ELECTRICAL ENGINEERING

Anjuman-I-Islam

Kalsekar Technical Campus, New Panvel 410206

University of Mumbai

CERTIFICATE

Certified that the project report entitled “**Analysis of Various Maximum Power Tracking Algorithm For Solar PV**” is a bonafied work done under my guidance by

- Khan Mohammed Saif(15EE19)
- Yadav Avdheshkumar(15EE52)
- Shaikh Shafiqurrahman(15EE45)
- Ansari Rabi(15EE03)

During the academic year **2018-19** in partial fulfilment of the requirements for the award of degree of **Bachelor of Engineering in Electrical Engineering** from **University of Mumbai**.

Date-

Approved by-

(Prof. SYED KALEEM)

Guide

(Prof. SYED KALEEM)

(Dr. ABDUL RAZZAK)

Head of Department

Director

CERTIFICATE OF APPROVAL

The foregoing dissertation entitled “**Analysis of Various Maximum Power Tracking Algorithm For Solar PV**” is hereby approved as a creditable study of Electrical Engineering presented by

- Khan Mohammed Saif(15EE19)
- Yadav Avdheshkumar(15EE52)
- Shaikh Shafiqurrahman(15EE45)
- Ansari Rabi(15EE03)

In a manner satisfactory to warrant its acceptance as a pre-requisite to their Degree in Bachelor of Electrical Engineering.

Internal Examiner

(Prof. SYED KALEEM)

External Examiner

DECLARATION

I declare that this written submission represents my ideas in my own words and where others ideas or words have been included; I have adequately cited and referenced the original sources. I also declared that I have adhered to all principles of academic honesty and integrity and have not represented or fabricated or falsified any idea/data/fact/source in my submission. I understand that any violation of the above will be cause for disciplinary action by the Institute and can also evoke penal action from the sources which have thus not been properly cited or from whom proper permission have not been taken when needed.

Signature

Khan Mohammed Saif

Signature

(Yadav Avdheshkumar)

Signature

(Shaikh Shafiqurrahman)

Signature

(Ansari Rabi)

Date-

ACKNOWLEDGEMENT

It gives me immense pleasure to present this project on “Analysis of Various Maximum Power Tracking Algorithm For Solar PV” carried out at AIKTC, New Panvel in accordance with prescribed syllabus of University of Mumbai for Electrical Engineering. I express my heartfelt gratitude to those who directly and indirectly contributed towards the completion of this project. I would like to thank Mr Abdul Razzak, Principal, ACEM for allowing me to undertake this guide Prof. Syed Kaleem for continuous support. I would like to thank all the faculty members, non-teaching staffs of Electrical Engineering of our College for their direct and indirect support and suggestion for performing the project.

Khan Mohammed Saif(15EE19)

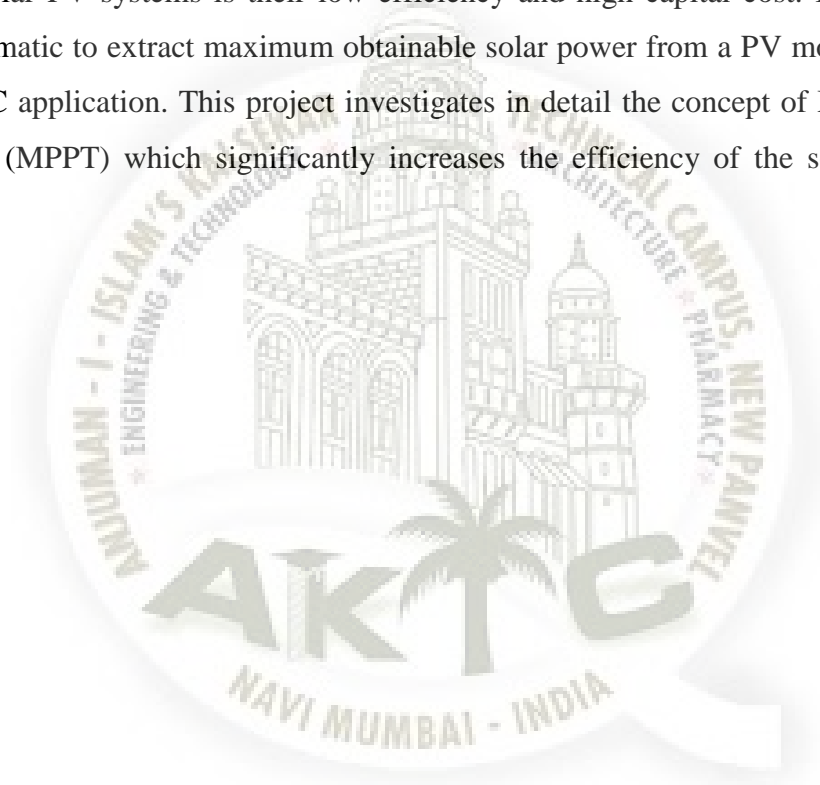
Yadav Avdheshkumar(15EE52)

Shaikh Shafiqurrahman(15EE45)

Ansari Rabi(15EE03)

Abstract

The need for renewable energy sources is on the rise because of the acute energy crisis in the world today. India plans to produce 20 Gigawatts Solar power by the year 2020, whereas we have only realized less than half a Gigawatt of our potential as of March 2010. Solar energy is a vital untapped resource in a tropical country like ours. The main hindrance for the penetration and reach of solar PV systems is their low efficiency and high capital cost. In this thesis, we examine a schematic to extract maximum obtainable solar power from a PV module and use the energy for a DC application. This project investigates in detail the concept of Maximum Power Point Tracking (MPPT) which significantly increases the efficiency of the solar photovoltaic system.



CONTENTS

Sr.No.	Title	Page no.
	Name	i
	Certificate	ii
	Certificate of Approval	iii
	Declaration	iv
	Acknowledgement	v
	Abstract	vi
	Contents	vii
	List Of Figure	viii
	List Of Tables	ix
1	Introduction	1
	1.1 The need for Renewable Energy	1
	1.2 Different sources of Renewable Energy	1
	1.3 Renewable Energy trends across the globe	3
	1.4 Literature Review	4
	1.5 Report Organization	5
2	Standalone Photovoltaic System Components	6
	2.1 Photovoltaic cell model	7
	2.2 Factors affecting PV performance.	12
3	MPPT techniques	15
	3.1 An overview of Maximum Power Point Tracking	15
	3.2 Different MPPT techniques	15
	3.3 Perturb & Observe Algorithm	20

3.4	Incremental Conductance	23
4	Simulation Results	24
5	Conclusion	31
6	Reference	32



LIST OF FIGURES

Fig no.	Title	Page no.
1.1	Global energy consumption in the year 2008	3
2.1	Various form of solar energy	6
2.2	Single diode model of a PV cell	8
2.3	I-V characteristics of a solar panel	10
2.4	P-V characteristics of a solar panel	11
2.5	I-V & P-V characteristics of a solar panel effect of irradiance	13
2.6	I-V & P-V characteristics of a solar panel effect of temperature	14
3.1	Solar panel characteristics showing MPP and operating points A and B	20
3.2	Flowchart of Perturb & Observe algorithm	21
3.3	Curve showing wrong tracking of MPP by P&O algorithm under rapidly varying irradiance	22
3.4	Algorithm of incremental conductance	24
4.1	MATLAB block diagram for I-V and P-V curve of open loop model	25
4.2	IV curve and PV curve of open loop model	26
4.3	MATLAB model for PnO algorithm	27

4.4	Output of perturb and observe algorithm	27
4.5	MATLAB model for Incremental conductance algorithm	28
4.6	Output of incremental conductance algorithm	28
4.7	MATLAB code for perturb and observe algorithm	29
4.8	Comparative study of system with MPPT and without MPPT.	30



LIST OF TABLES

Table no.	Title	Page no.
3.1	Characteristics of different MPPT techniques	19



Chapter 1: Introduction

1.1 The need for Renewable Energy

Renewable energy is the energy which comes from natural resources such as sunlight, wind, rain, tides and geothermal heat. These resources are renewable and can be naturally replenished. Therefore, for all practical purposes, these resources can be considered to be inexhaustible, unlike dwindling conventional fossil fuels [1]. The global energy crunch has provided a renewed impetus to the growth and development of Clean and Renewable Energy sources. Clean Development Mechanisms (CDMs) [2] are being adopted by organizations all across the globe.

Apart from the rapidly decreasing reserves of fossil fuels in the world, another major factor working against fossil fuels is the pollution associated with their combustion. Contrastingly, renewable energy sources are known to be much cleaner and produce energy without the harmful effects of pollution unlike their conventional counterparts.

1.2 Different sources of Renewable Energy

1.2.1 Wind power

Wind turbines can be used to harness the energy [3] available in airflows. Current day turbines range from around 600 kW to 5 MW [4] of rated power. Since the power output is a function of the cube of the wind speed, it increases rapidly with an increase in available wind velocity. Recent advancements have led to aerofoil wind turbines, which are more efficient due to a better aerodynamic structure.

1.2.2 Solar power

The tapping of solar energy owes its origins to the British astronomer John Herschel [5] who famously used a solar thermal collector box to cook food during an expedition to Africa. Solar energy can be utilized in two major ways. Firstly, the captured heat can be used as solar thermal energy, with applications in space heating. Another alternative is the conversion of incident solar radiation to electrical energy, which is the most usable form of energy. This can be achieved with the help of solar photovoltaic cells [6] or with concentrating solar power plants.

1.2.3 Small hydropower

Hydropower installations up to 10MW are considered as small hydropower and counted as renewable energy sources [7]. These involve converting the potential energy of water stored in dams into usable electrical energy through the use of water turbines. Run-of-the-river hydroelectricity aims to utilize the kinetic energy of water without the need of building reservoirs or dams.

1.2.4 Biomass

Plants capture the energy of the sun through the process of photosynthesis. On combustion, these plants release the trapped energy. This way, biomass works as a natural battery to store the sun's energy [8] and yield it on requirement.

1.2.5 Geothermal

Geothermal energy is the thermal energy which is generated and stored [9] within the layers of the Earth. The gradient thus developed gives rise to a continuous conduction of heat from the core to the surface of the earth. This gradient can be utilized to heat water to produce superheated

steam and use it to run steam turbines to generate electricity. The main disadvantage of geothermal energy is that it is usually limited to regions near tectonic plate boundaries, though recent advancements have led to the propagation of this technology [10].

1.3 Renewable Energy trends across the globe

The current trend across developed economies tips the scale in favour of Renewable Energy. For the last three years, the continents of North America and Europe have embraced more renewable power capacity as compared to conventional power capacity. Renewables accounted for 60% of the newly installed power capacity in Europe in 2009 and nearly 20% of the annual power production [7].

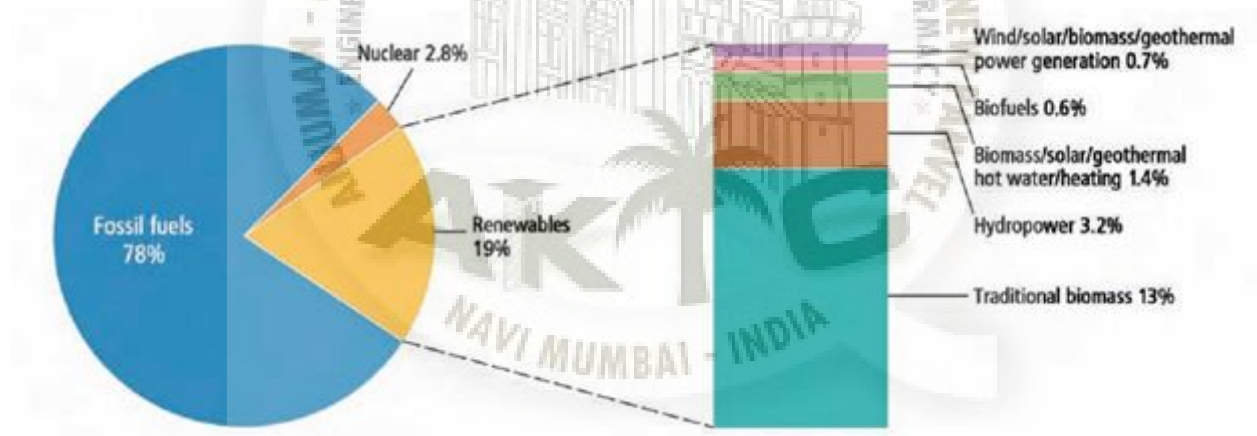


Figure 1.1 : Global energy consumption in the year 2008 [7]

As can be seen from the figure 1.1, wind and biomass occupy a major share of the current renewable energy consumption. Recent advancements in solar photovoltaic technology and constant incubation of projects in countries like Germany and Spain have brought around

tremendous growth in the solar PV market as well, which is projected to surpass other renewable energy sources in the coming years.

By 2009, more than 85 countries had some policy target to achieve a predetermined share of their power capacity through renewables. This was an increase from around 45 countries in 2005. Most of the targets are also very ambitious, landing in the range of 30-90% share of national production through renewables [7]. Noteworthy policies are the European Union's target of achieving 20% of total energy through renewables by 2020 and India's Jawaharlal Nehru Solar Mission, through which India plans to produce 20GW solar energy by the year 2022.

1.4 Literature Review

Studies show that a solar panel converts 30-40% of energy incident on it to electrical energy. A Maximum Power Point Tracking algorithm is necessary to increase the efficiency of the solar panel.

There are different techniques for MPPT such as Perturb and Observe (hill climbing method), Incremental conductance, Fractional Short Circuit Current, Fractional Open Circuit Voltage, Fuzzy Control, Neural Network Control etc. Among all the methods Perturb and observe (P&O) and Incremental conductance are most commonly used because of their simple implementation, lesser time to track the MPP and several other economic reasons.

Under abruptly changing weather conditions (irradiance level) as MPP changes continuously, P&O takes it as a change in MPP due to perturbation rather than that of irradiance and sometimes ends up in calculating wrong MPP[11]. However this problem gets avoided in

Incremental Conductance method as the algorithm takes two samples of voltage and current to calculate MPP. However, instead of higher efficiency the complexity of the algorithm is very high compared to the previous one and hence the cost of implementation increases. So we have to mitigate with a tradeoff between complexity and efficiency.

It is seen that the efficiency of the system also depends upon the converter. Typically it is maximum for a buck topology, then for buck-boost topology and minimum for a boost topology.

When multiple solar modules are connected in parallel, another analog technique TEODI is also very effective which operates on the principle of equalization of output operating points in correspondence to force displacement of input operating points of the identical operating system. It is very simple to implement and has high efficiency both under stationary and time varying atmospheric conditions [12].

1.5 Report Organization

CHAPTER 1 contains the basic information and introduction to solar energy.

CHAPTER 2 contains the PV model and study of effect of various parameters on performance of PV characteristics like irradiance and temperature.

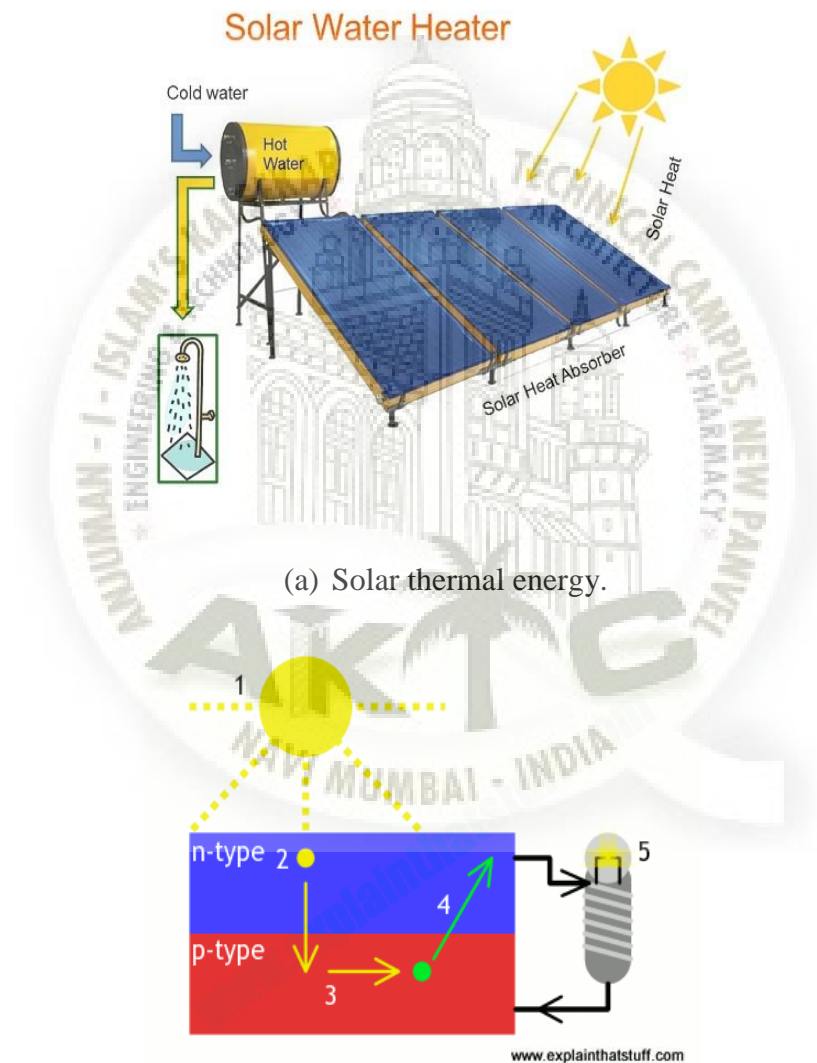
CHAPTER 3 discusses the various MPPT technique.

CHAPTER 4 contains all the MATLAB results.

CHAPTER 5 is conclusion.

Chapter 2: Standalone Photovoltaic System Components

We receive various form of energy form the solar. One that we conventionally using are solar thermal energy. Which we use for cooking, for drying cloths and many more application.



(a) Solar thermal energy.

(b) Solar electrical energy.

Fig 2.1: Various form of solar energy.

The energy is heat type of energy which we harvest. The heat energy is very dependent and is very difficult to use for different application. The only application of this energy is to use it as a thermal source for day to day application.

The other type of energy received is photonic energy. Which states that the light is streams of energy bundles called as photons. The theory was proposed by Albert Einstein. The theory state that this energy can be easily converted into various different forms. Hence is main focus of study. We will explore how we can convert this into electrical energy in subsequent topics.

2.1 Photovoltaic cell model

A photovoltaic cell or photoelectric cell is a semiconductor device that converts light to electrical energy by photovoltaic effect. If the energy of photon of light is greater than the band gap then the electron is emitted and the flow of electrons creates current.

However a photovoltaic cell is different from a photodiode. In a photodiode light falls on n-channel of the semiconductor junction and gets converted into current or voltage signal but a photovoltaic cell is always forward biased.

2.1.1 PV module

Usually a number of PV modules are arranged in series and parallel to meet the energy requirements. PV modules of different sizes are commercially available (generally sized from 60W to 170W). For example, a typical small scale desalination plant requires a few thousand watts of power.

2.1.2 PV modeling

A PV array consists of several photovoltaic cells in series and parallel connections. Series connections are responsible for increasing the voltage of the module whereas the parallel connection is responsible for increasing the current in the array.

Typically a solar cell can be modeled by a current source and an inverted diode connected in parallel to it. It has its own series and parallel resistance. Series resistance is due to hindrance in the path of flow of electrons from n to p junction and parallel resistance is due to the leakage current.

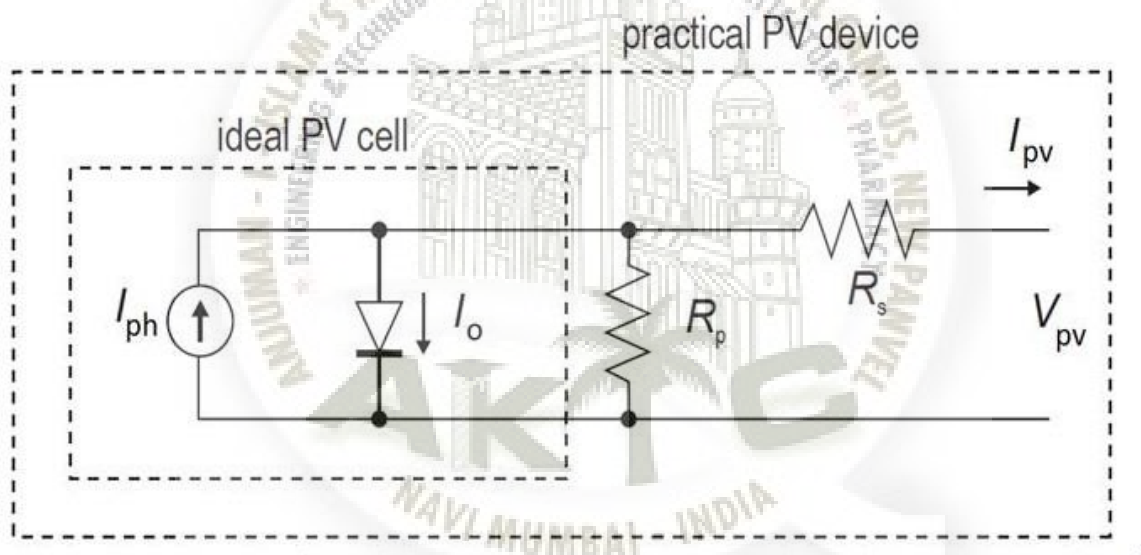


Fig 2.2 Single diode model of a PV cell

In this model we consider a current source (I) along with a diode and series resistance (R_s). The shunt resistance (R_{SH}) in parallel is very high, has a negligible effect and can be neglected.

The output current from the photovoltaic array is

$$\mathbf{I = I_{sc} - I_d} \quad (2.1)$$

$$I_d = I_o (e^{qV_d/kT} - 1) \quad (2.2)$$

where I_o is the reverse saturation current of the diode, q is the electron charge, V_d is the voltage across the diode, k is Boltzmann constant ($1.38 * 10^{-19}$ J/K) and T is the junction temperature in Kelvin (K)

From eq. 3.1 and 3.2

$$I = I_{sc} - I_o (e^{qV_d/kT} - 1) \quad (2.3)$$

Using suitable approximations,

$$I_d = I_o (e^{qV_d/kT} - 1) \quad (2.4)$$

where, I is the photovoltaic cell current, V is the PV cell voltage, T is the temperature (in Kelvin) and n is the diode ideality factor.

In order to model the solar panel accurately we can use two diode model but in our project our scope of study is limited to the single diode model. Also, the shunt resistance is very high and can be neglected during the course of our study.

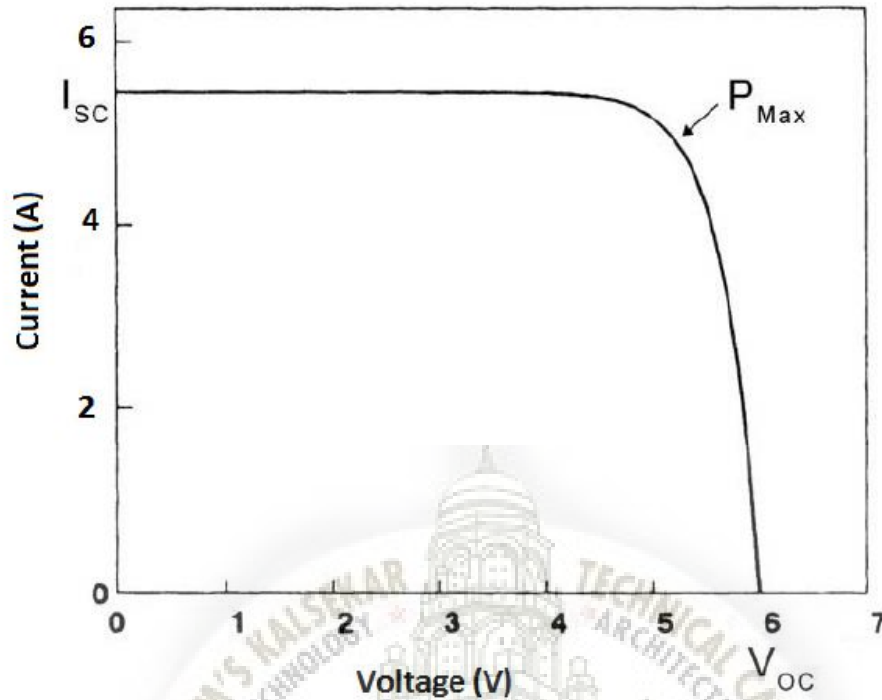


Fig 2.3 I-V characteristics of a solar panel [13]

The I-V characteristics of a typical solar cell are as shown in the Figure 2.3.

- **Short Circuit Point:** The point where voltage across pv terminal is zero but current is maximum is called short circuit point. The current at this point is maximum and is called as short circuit current I_{sc} .
- **Open Circuit Voltage:** The point where the voltage across PV terminal is maximum and the current flowing is zero is called as open circuit point. The voltage at this point is maximum and is called as open circuit voltage (V_{oc}).

When the voltage and the current characteristics are multiplied we get the P-V characteristics as shown in Figure 2.3. The point indicated as MPP is the point at which the panel power output is maximum.

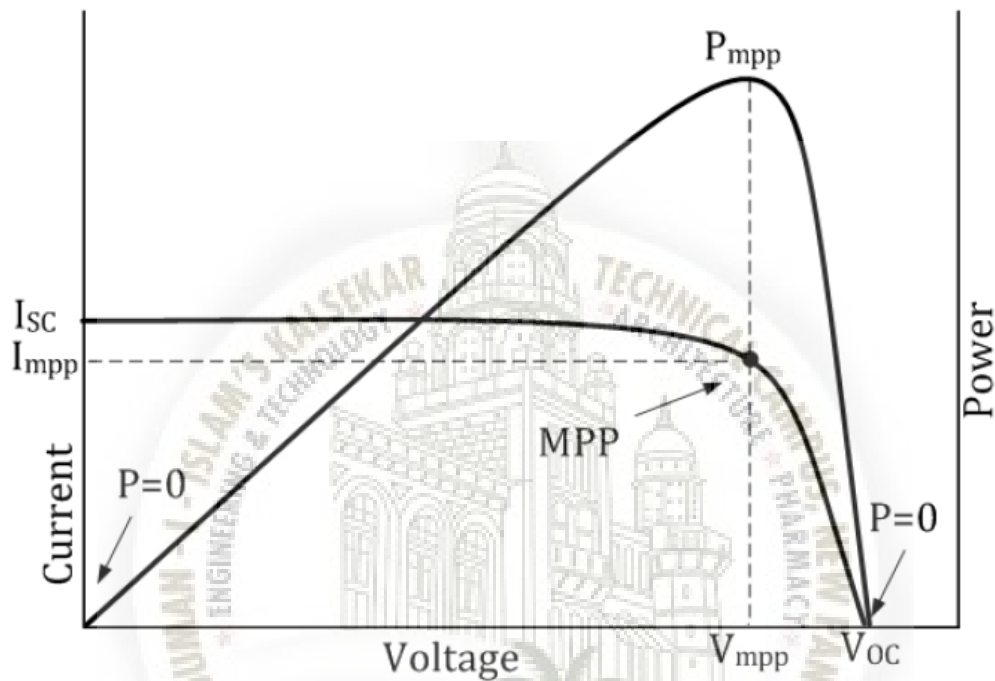


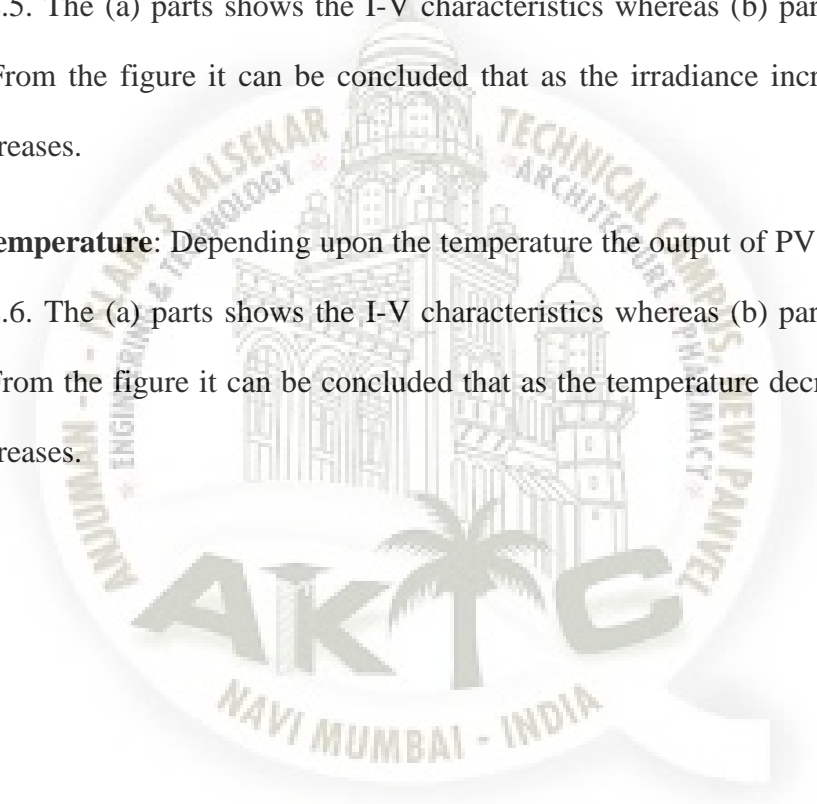
Fig 2.4 I-V characteristics of a solar panel [13]

2.2 Factors affecting PV performance.

There are various parameters which affects the PV performance. Let's discuss them in this section.

2.2.1 Effect of irradiance: Depending upon the irradiance the output of PV changes. This is depicted in fig 2.5. The (a) parts shows the I-V characteristics whereas (b) part shows the P-V characteristics. From the figure it can be concluded that as the irradiance increases the power output of PV increases.

2.2.1 Effect of temperature: Depending upon the temperature the output of PV changes. This is depicted in fig 2.6. The (a) parts shows the I-V characteristics whereas (b) part shows the P-V characteristics. From the figure it can be concluded that as the temperature decreases the power output of PV increases.



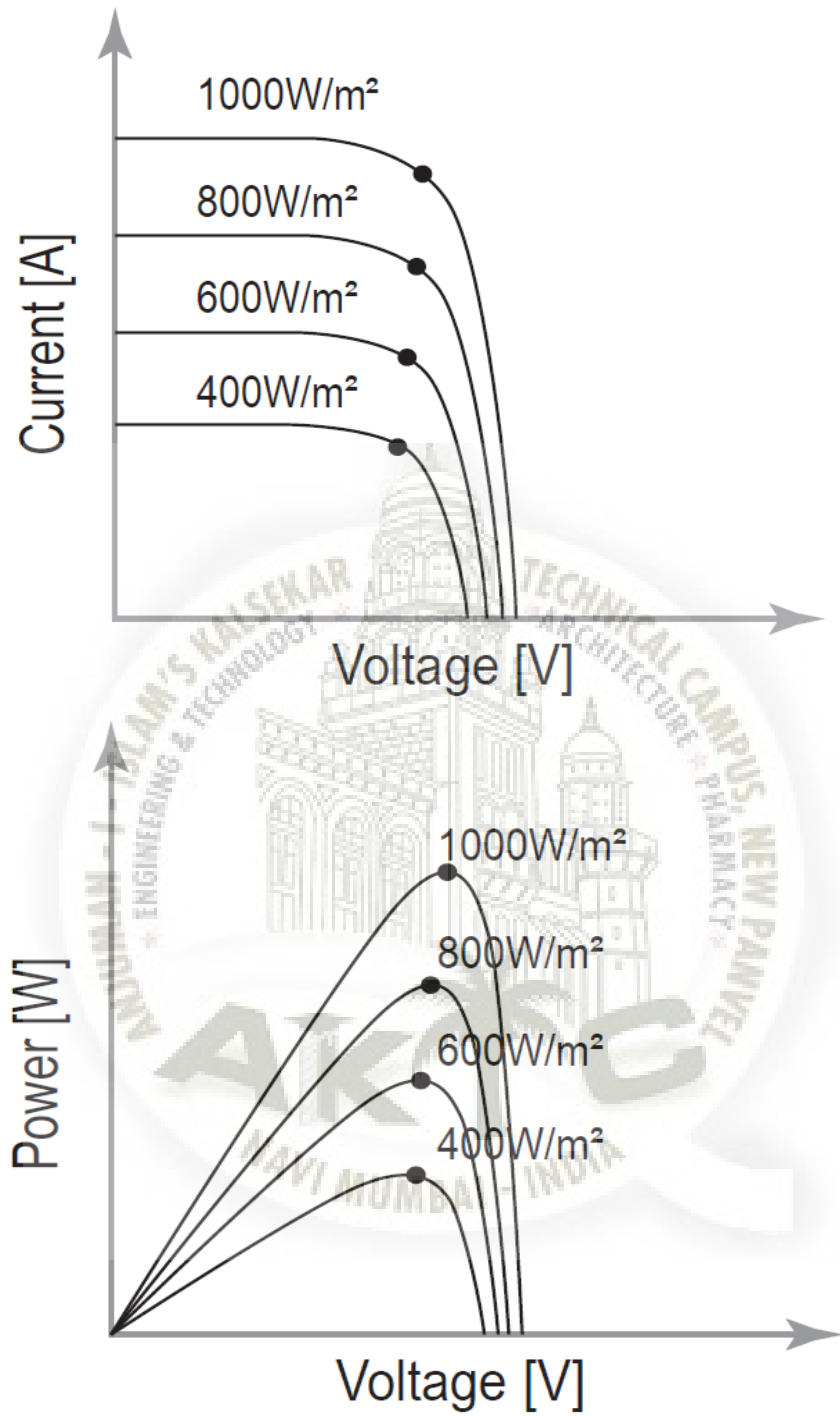


Fig 2.5 I-V & P-V characteristics of a solar panel effect of irradiance

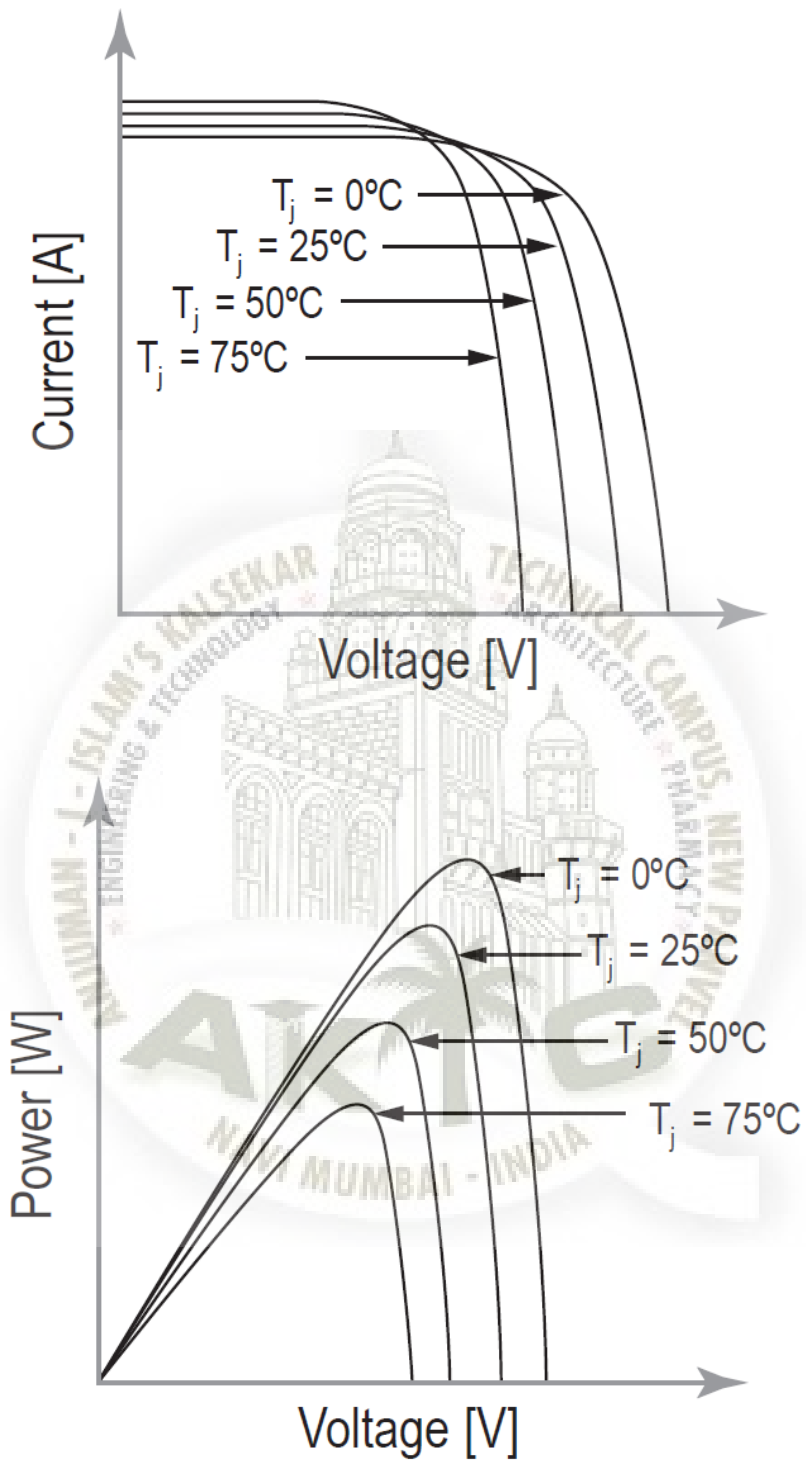


Fig 2.6 I-V characteristics of a solar panel effect of temperature

Chapter 3: MPPT techniques

3.1 An overview of Maximum Power Point Tracking

A typical solar panel converts only 30 to 40 percent of the incident solar irradiation into electrical energy. Maximum power point tracking technique is used to improve the efficiency of the solar panel.

According to Maximum Power Transfer theorem, the power output of a circuit is maximum when the Thevenin impedance of the circuit (source impedance) matches with the load impedance. Hence our problem of tracking the maximum power point reduces to an impedance matching problem.

In the source side we are using a boost converter connected to a solar panel in order to enhance the output voltage so that it can be used for different applications like motor load. By changing the duty cycle of the boost converter appropriately we can match the source impedance with that of the load impedance.

3.2 Different MPPT techniques

There are different techniques used to track the maximum power point. Few of the most popular Techniques are:

- 1) Perturb and Observe (hill climbing method)
- 2) Incremental Conductance method
- 3) Fractional short circuit current
- 4) Fractional open circuit voltage
- 5) Neural networks

The choice of the algorithm depends on the time complexity the algorithm takes to track the MPP, implementation cost and the ease of implementation.

3.2.1 Perturb & Observe

Perturb & Observe (P&O) is the simplest method. In this we use only one sensor, that is the voltage sensor, to sense the PV array voltage and so the cost of implementation is less and hence easy to implement. The time complexity of this algorithm is very less but on reaching very close to the MPP it doesn't stop at the MPP and keeps on perturbing on both the directions. When this happens the algorithm has reached very close to the MPP and we can set an appropriate error limit or can use a wait function which ends up increasing the time complexity of the algorithm.

However the method does not take account of the rapid change of irradiation level (due to which MPPT changes) and considers it as a change in MPP due to perturbation and ends up calculating the wrong MPP. To avoid this problem we can use incremental conductance method.

3.2.2 Incremental Conductance

Incremental conductance method uses two voltage and current sensors to sense the output voltage and current of the PV array.

At MPP the slope of the PV curve is 0.

$$(dP/dV)_{MPP} = d(VI)/dV \quad (3.1)$$

$$0 = I + V dI/dV_{MPP} \quad (3.2)$$

$$dI/dV_{MPP} = - I/V \quad (3.3)$$

The left hand side is the instantaneous conductance of the solar panel. When this instantaneous conductance equals the conductance of the solar then MPP is reached.

Here we are sensing both the voltage and current simultaneously. Hence the error due to change in irradiance is eliminated. However the complexity and the cost of implementation increases.

As we go down the list of algorithms the complexity and the cost of implementation goes on increasing which may be suitable for a highly complicated system. This is the reason that Perturb and Observe and Incremental Conductance method are the most widely used algorithms.

Owing to its simplicity of implementation we have chosen the Perturb & Observe algorithm for our study among the two.

3.2.3 Fractional open circuit voltage

The near linear relationship between V_{MPP} and V_{OC} of the PV array, under varying irradiance and temperature levels, has given rise to the fractional V_{OC} method.

$$V_{MPP} = k_1 V_{OC} \quad (3.4)$$

where k_1 is a constant of proportionality. Since k_1 is dependent on the characteristics of the PV array being used, it usually has to be computed beforehand by empirically determining V_{MPP} and V_{OC} for the specific PV array at different irradiance and temperature levels. The factor k_1 has been reported to be between 0.71 and 0.78. Once k_1 is known, V_{MPP} can be computed with V_{OC} measured periodically by momentarily shutting down the power converter. However, this incurs some disadvantages, including temporary loss of power. [15].

3.2.4 Fractional short circuit current

Fractional I_{SC} results from the fact that, under varying atmospheric conditions, I_{MPP} is approximately linearly related to the I_{SC} of the PV array.

$$\frac{I_{MPP}}{I_{sc}} = k_2 \quad (3.5)$$

where k_2 is a proportionality constant. Just like in the fractional V_{OC} technique, k_2 has to be determined according to the PV array in use. The constant k_2 is generally found to be between 0.78 and 0.92. Measuring I_{SC} during operation is problematic. An additional switch usually has to be added to the power converter to periodically short the PV array so that I_{SC} can be measured using a current sensor [15].

3.2.5 Fuzzy Logic Control

Microcontrollers have made using fuzzy logic control popular for MPPT over last decade. Fuzzy logic controllers have the advantages of working with imprecise inputs, not needing an accurate mathematical model, and handling nonlinearity [15].

3.2.6 Neural Network

Another technique of implementing MPPT which are also well adapted for microcontrollers is neural networks. Neural networks commonly have three layers: input, hidden, and output layers. The number nodes in each layer vary and are user-dependent. The input variables can be PV array parameters like V_{OC} and I_{SC} , atmospheric data like irradiance and temperature, or any combination of these. The output is usually one or several reference signals like a duty cycle signal used to drive the power converter to operate at or close to the MPP [15].

Table 3.1 : Characteristics of different MPPT techniques [15]

MPPT technique	Convergence speed	Implementation complexity	Periodic tuning	Sensed parameters
Perturb & observe	Varies	Low	No	Voltage
Incremental conductance	Varies	Medium	No	Voltage, current
Fractional V_{oc}	Medium	Low	Yes	Voltage
Fractional I_{sc}	Medium	Medium	Yes	Current
Fuzzy logic control	Fast	High	Yes	Varies
Neural network	Fast	High	Yes	Varies







4.4 Incremental Conductance

The disadvantage of the perturb and observe method to track the peak power under fast varying atmospheric condition is overcome by IC method. The IC can determine that the MPPT has reached the MPP and stop perturbing the operating point. If this condition is not met, the direction in which the MPPT operating point must be perturbed can be calculated using the relationship between dI/dV and $-I/V$. This relationship is derived from the fact that dP/dV is negative when the MPPT is to the right of the MPP and positive when it is to the left of the MPP. This algorithm has advantages over P&O in that it can determine when the MPPT has reached the MPP, where P&O oscillates around the MPP. Also, incremental conductance can track rapidly increasing and decreasing irradiance conditions with higher accuracy than P and O.

Fig. 3.4 shows that the slope of P-V array power curve is zero at MPP, increasing on the left of the MPP and decreasing on the right hand side of the MPP. The basic equations of this methods are as follow:

$$\begin{aligned} \frac{dI}{dV} &= -\frac{I}{V} \text{ at MPP} \\ \frac{dI}{dV} &> -\frac{I}{V} \text{ left of MPP} \\ \frac{dI}{dV} &< -\frac{I}{V} \text{ right of MPP} \end{aligned} \quad (3.6)$$

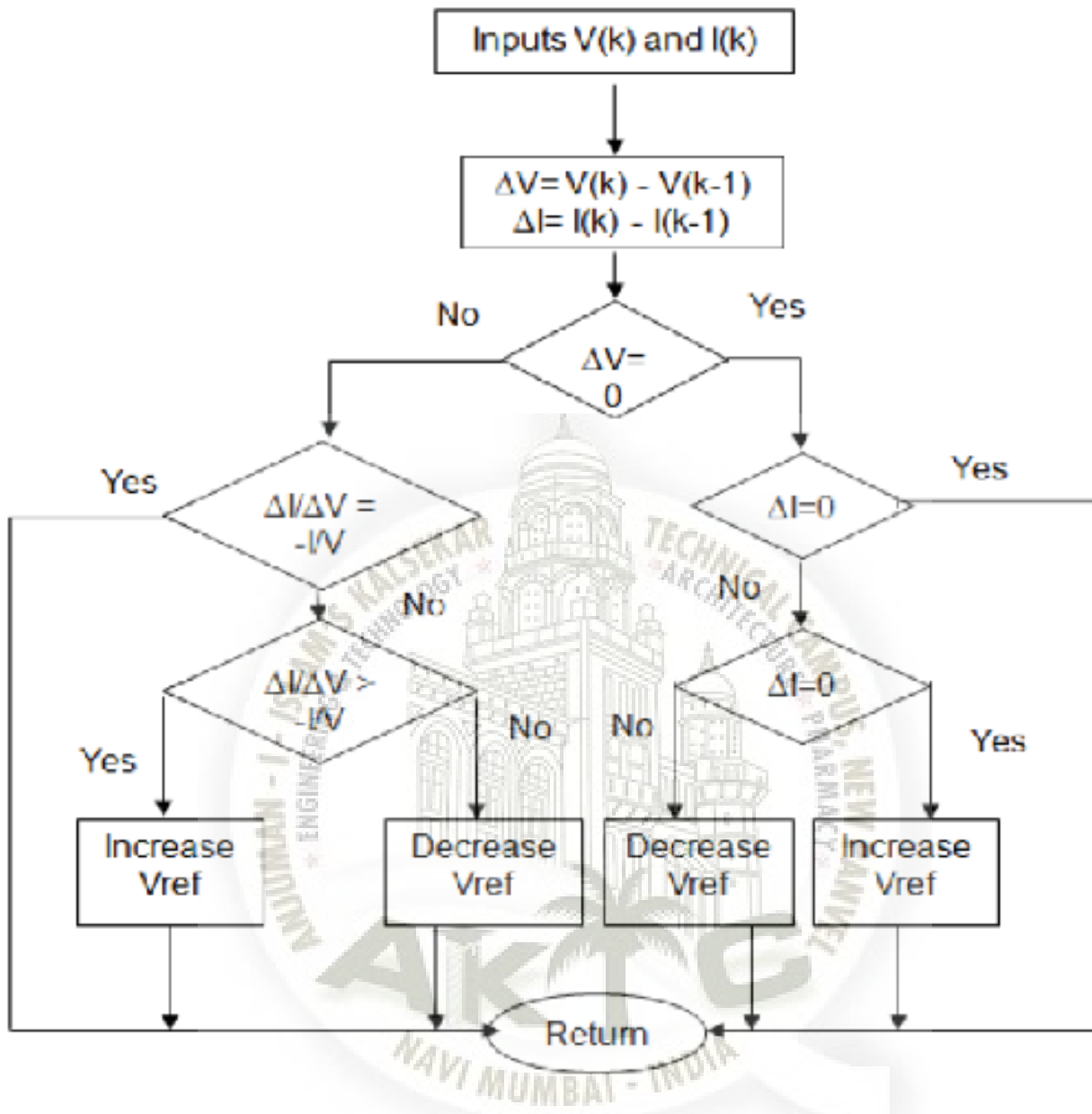


Fig 3.4 . Algorithm of incremental conductance.

Chapter 4: Simulation Output

This chapter depicts the various MATLAB results. The matlab software used is MATLAB 2015a. The simpower toolox of matlab is used.

Fig 4.1 shows the open loop model of matlab used for the plotting of IV curve

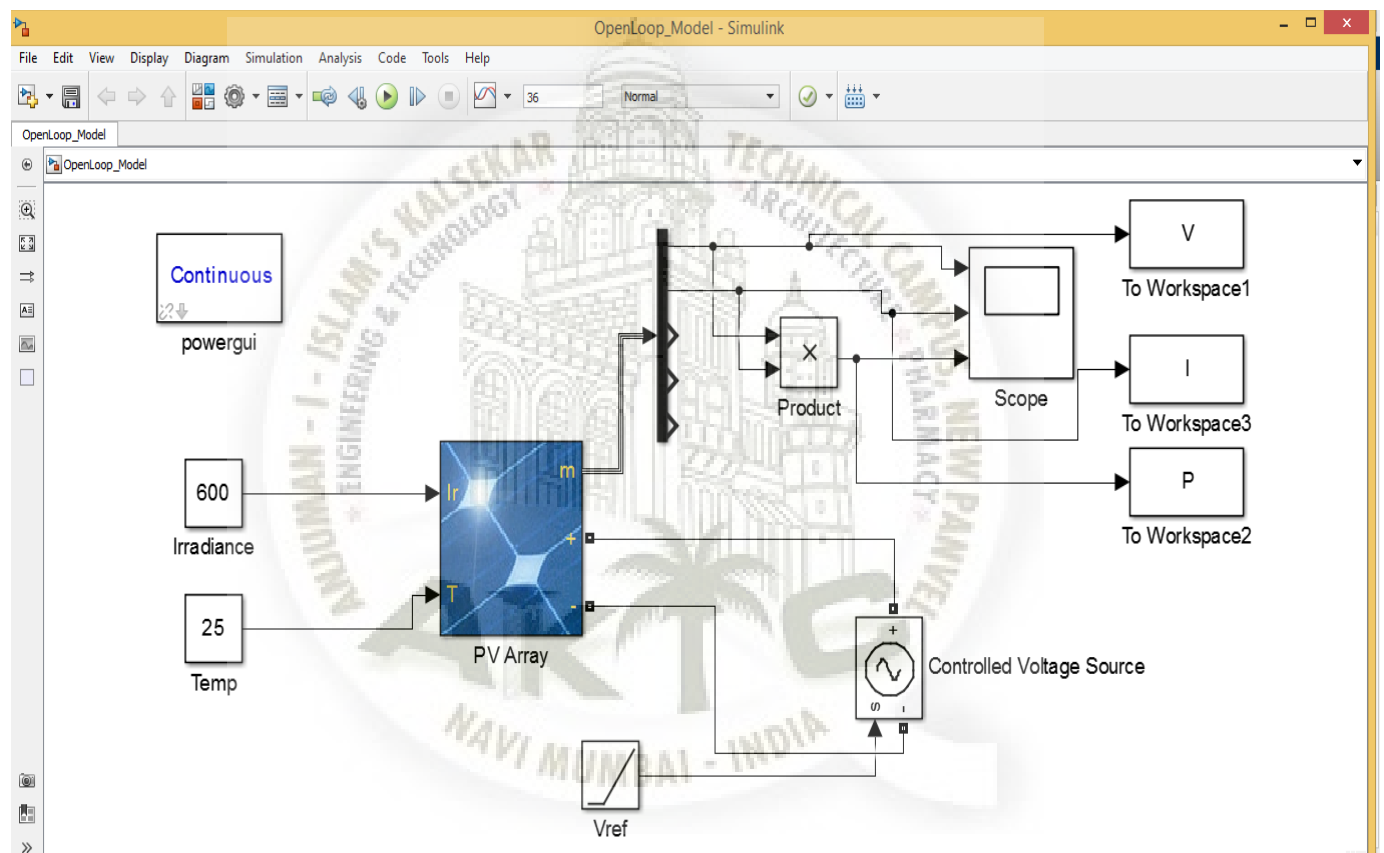


Fig 4.1 MATLAB block diagram for I-V and P-V curve of open loop model.

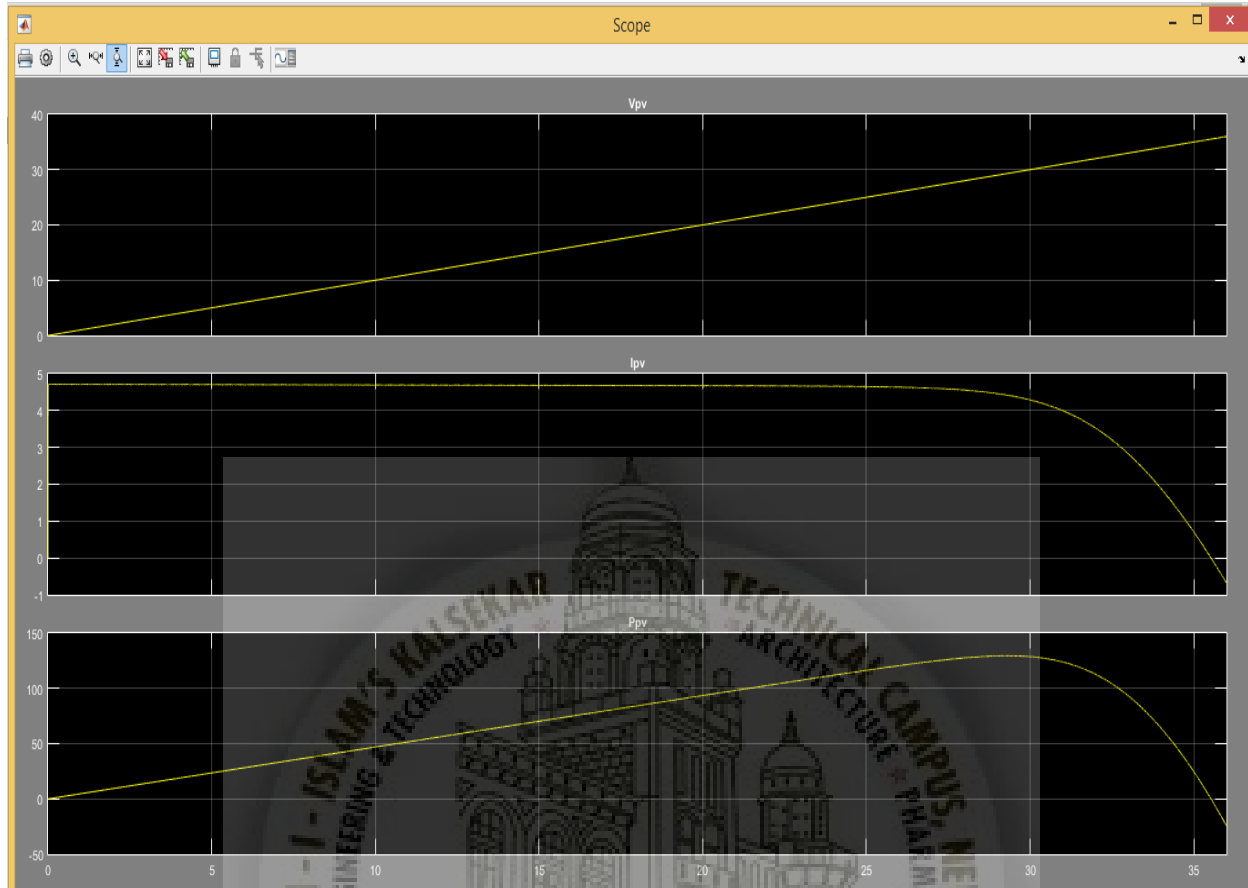


Fig 4.2 IV curve and PV curve of open loop model.

The output of system shown in fig 4.1 is given in fig 4.2. The first part represents the voltage. The second part represents the current and the third part represent the power. From fig 4.2 it can be easily depicted that the output of model is similar to the output of system as described in chapter 2.

Fig 4.3 shows the MATLAB diagram of Perturb and observe algorithm. Its results are shown in Fig 4.4.

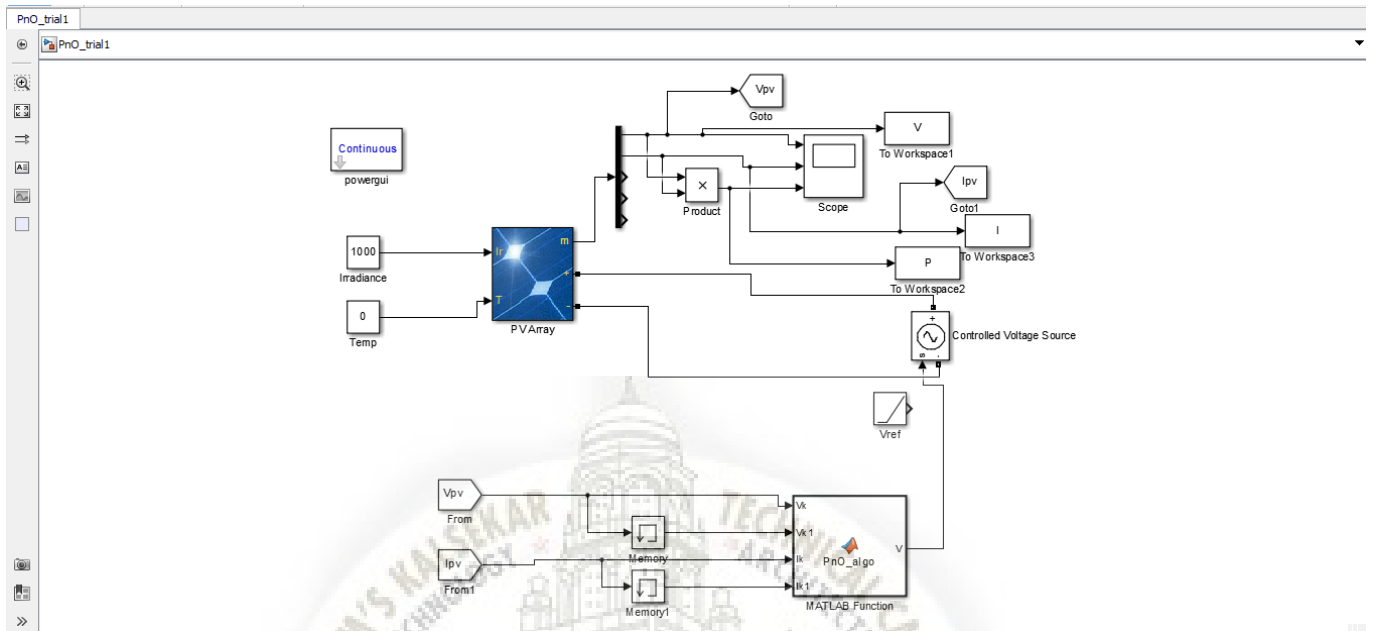


Fig 4.3 MATLAB model for PnO algorithm.

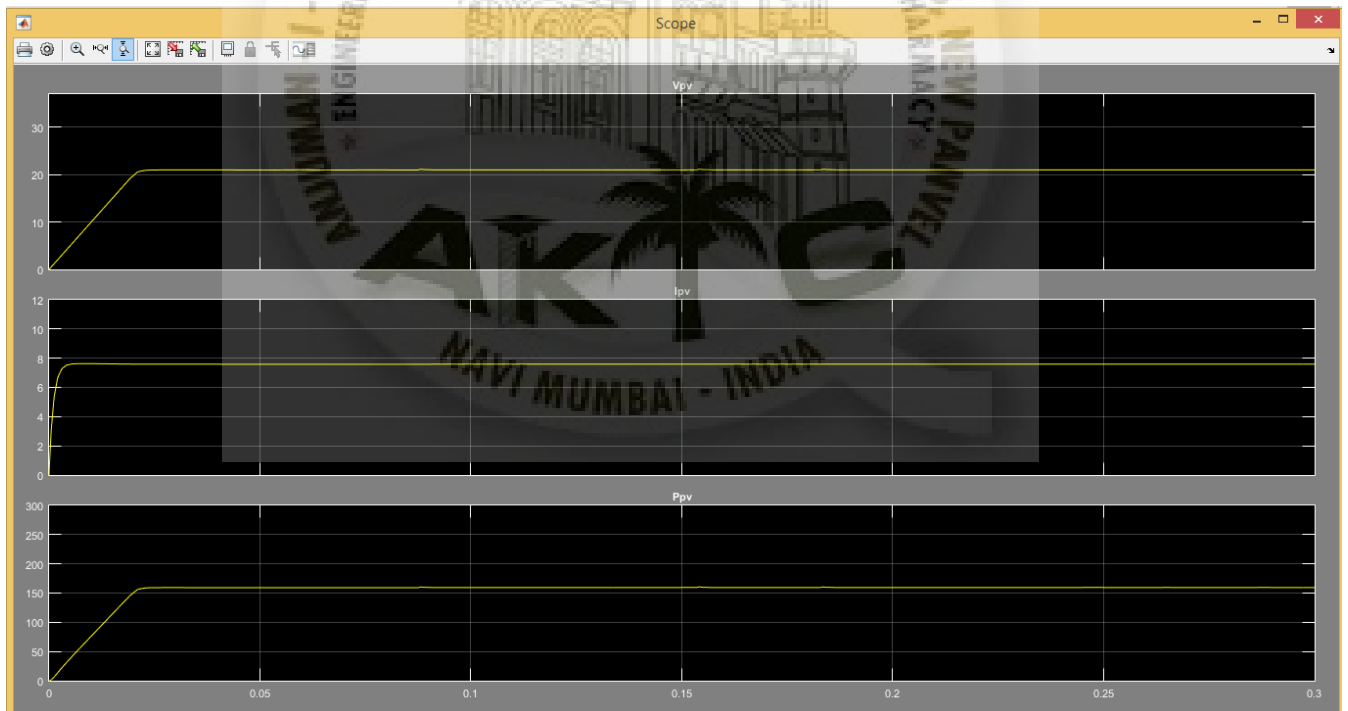


Fig 4.4 Output of perturb and observe algorithm

The Fig 4.5 shows the block diagram of incremental conductance technique. The output of same is shown in fig 4.6.

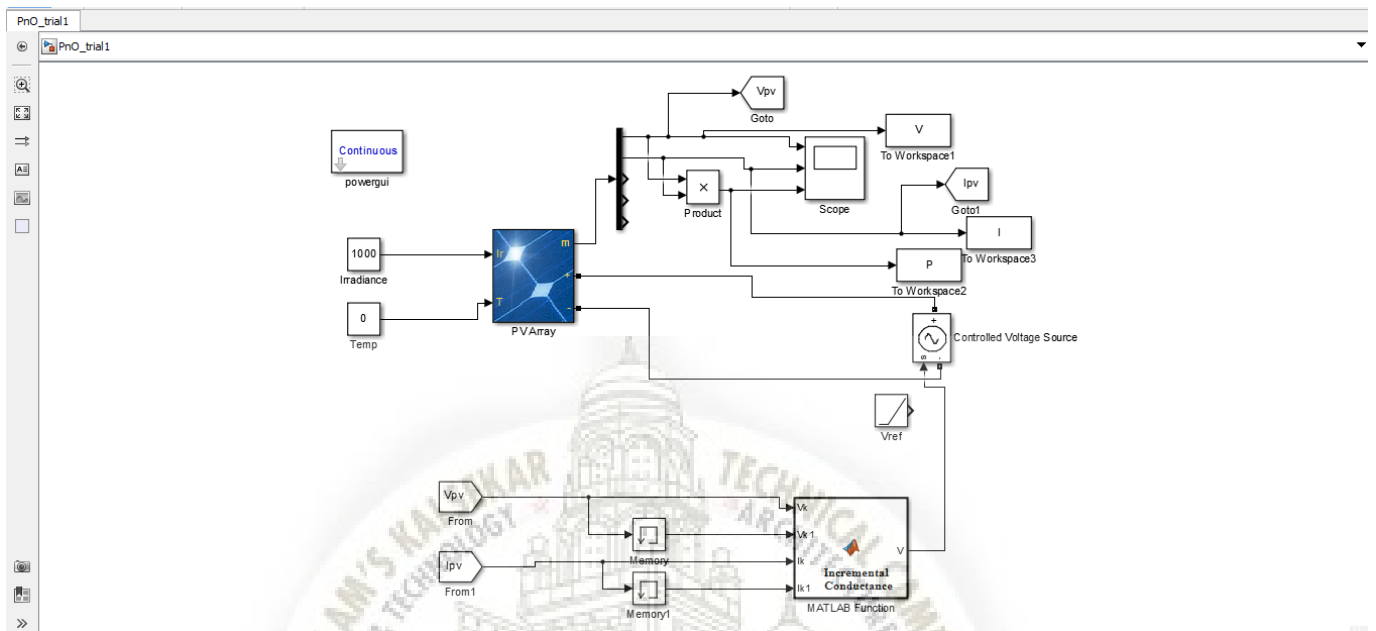


Fig 4.5 MATLAB model for Incremental conductance algorithm.

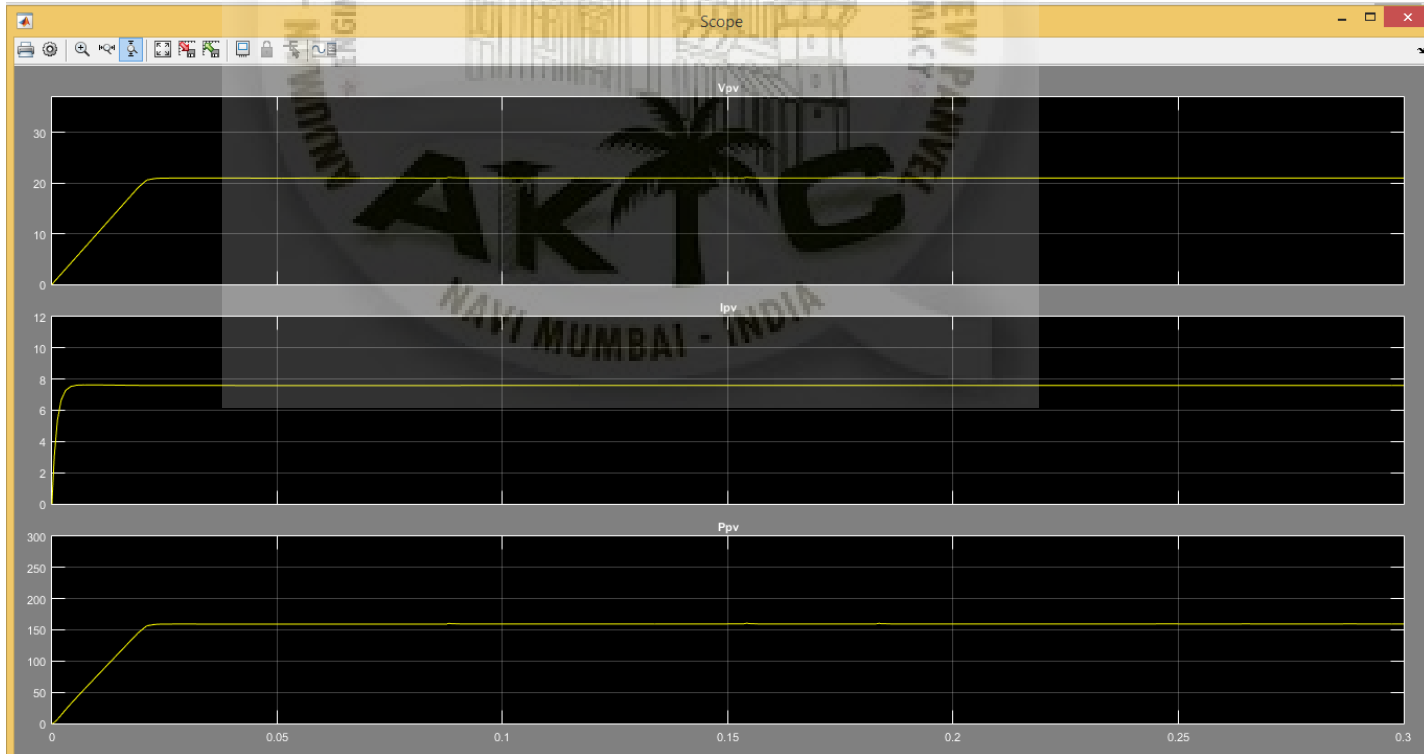
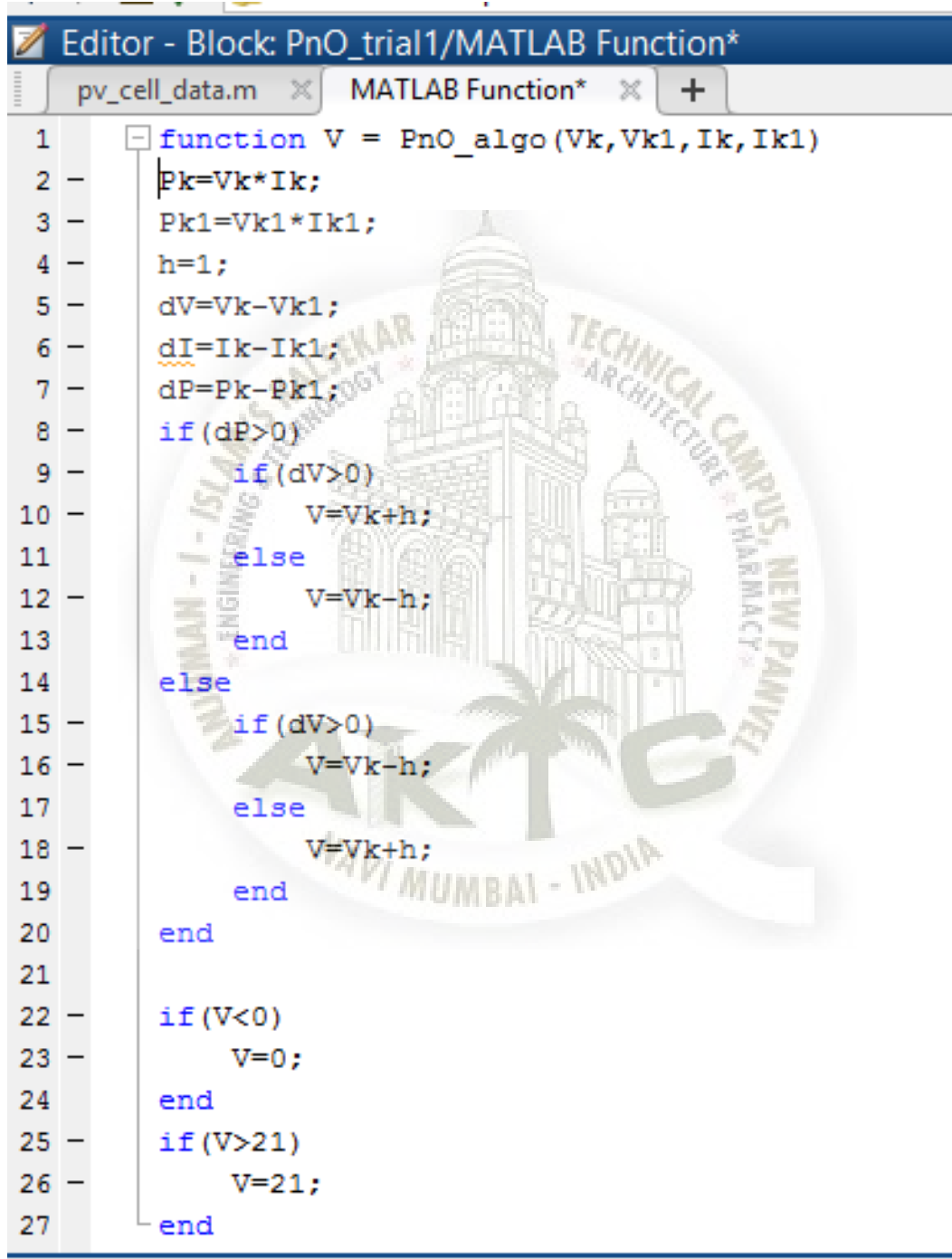


Fig 4.6 Output of incremental conductance algorithm

Fig 4.7 shows the MATAB code of Perturb and observe algorithm. The code is written in c language. And follows the flowchart as described in chapter 3.



```
1 function V = PnO_algo (Vk,Vk1,Ik,Ik1)
2   Pk=Vk*Ik;
3   Pk1=Vk1*Ik1;
4   h=1;
5   dV=Vk-Vk1;
6   dI=Ik-Ik1;
7   dP=Pk-Pk1;
8   if (dP>0)
9     if (dV>0)
10      V=Vk+h;
11    else
12      V=Vk-h;
13    end
14  else
15    if (dV>0)
16      V=Vk-h;
17    else
18      V=Vk+h;
19    end
20  end
21
22  if (V<0)
23    V=0;
24  end
25  if (V>21)
26    V=21;
27  end
```

Fig 4.7 MATLAB code for perturb and observe algorithm.

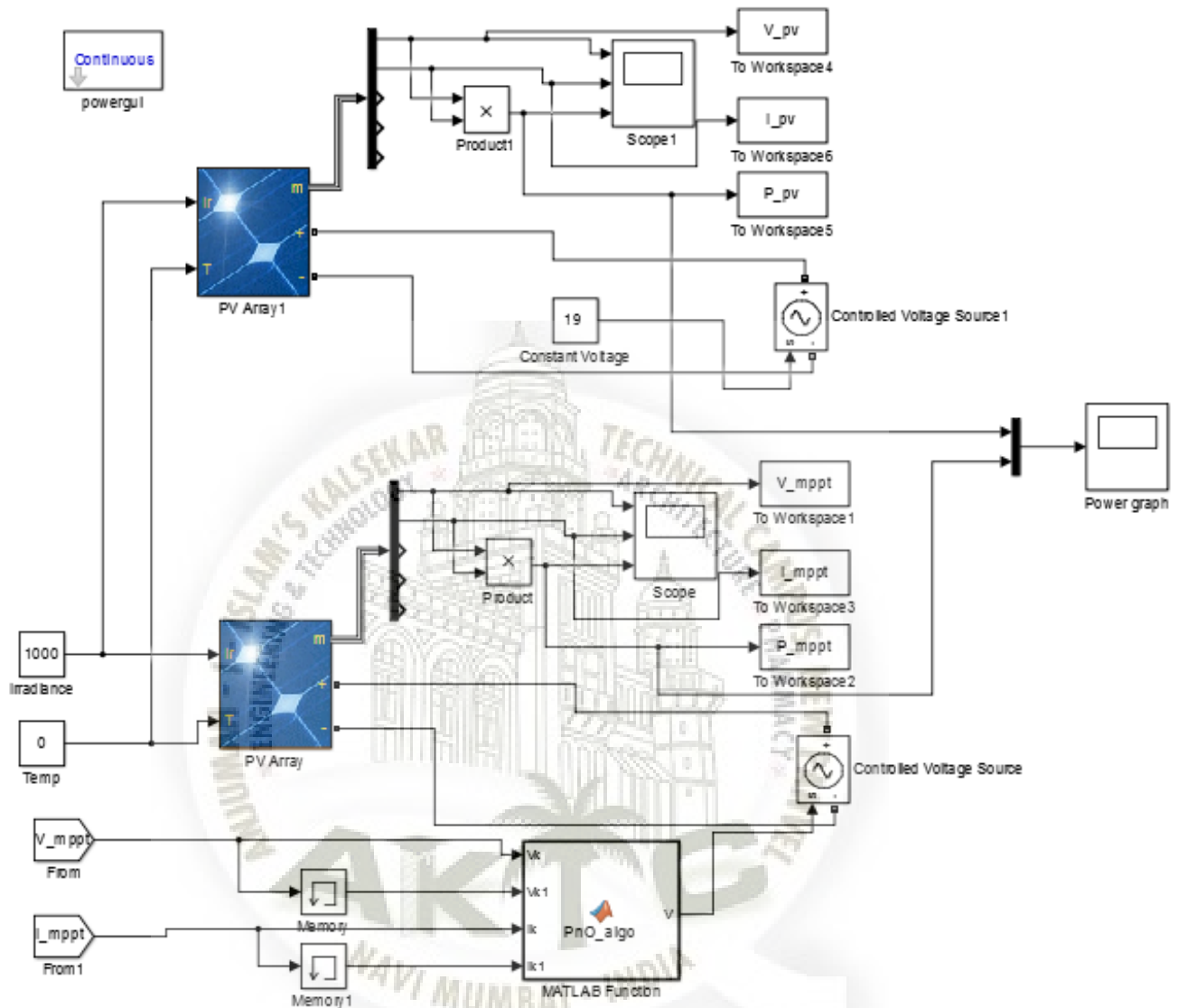


Fig 4.8 Comparative study of system with MPPT and without MPPT.

In order to compare the results of system with MPPT and system without MPPT the results are shown in Fig. 4.8.

Chapter 5: Conclusion

The model shown in Figure 2.3 was simulated using SIMULINK and MATLAB. The plots obtained in the different scopes have been shown in Chapter 4.

The simulation was first run with the switch on no MPPT mode, bypassing the MPPT algorithm block in the circuit. It was seen that when we do not use an MPPT algorithm, the power obtained at the load side was around 95 Watts (Figure 6.5) for a solar irradiation value of 85 Watts per sq. cm. It must be noted that the PV panel generated around 250 Watts power for this level of solar irradiation. Therefore, the conversion efficiency came out to be very low.

The simulation was then run with the switch on MPPT mode. This included the MPPT block in the circuit and the PI controller was fed the V_{ref} as calculated by the P&O algorithm. Under the same irradiation conditions, the PV panel continued to generate around 250 Watts power. In this case, however, the power obtained at the load side was found to be around 215 Watts, thus increasing the conversion efficiency of the photovoltaic system as a whole.

The loss of power from the available 250 Watts generated by the PV panel can be explained by switching losses in the high frequency PWM switching circuit and the inductive and capacitive losses in the Boost Converter circuit.

Therefore, it was seen that using the Perturb & Observe MPPT technique increased the efficiency of the photovoltaic system by approximately 126% from an earlier output power of around 95 Watts to an obtained output power of around 215 Watts.

References

- [1] Resource and Energy Economics - C Withagen - 1994 - Elsevier
- [2] Semana Scientífica - L Pedroni - 2004 - Google Books
- [3] Wind power in Power Systems (Book) - T Ackermann - 2005 - Wiley
- [4] Analysis of Wind Energy in the EU-25 - European Wind Energy Association - 2007
- [5] Solar Power (Book) - T Harko
- [6] Harnessing Solar Power (Book) - K Zweibel – 1990
- [7] REN21 Renewables 2010 Global Status Report
- [8] “How biomass energy works” - Union of Concerned Scientists
- [9] Geothermal Energy: Renewable Energy and the Environment - William E. Glassley - CRC Press - 2010
- [10] Impact of Enhanced Geothermal Systems (EGS) on the United States in the 21st Century: An Assessment - Tester, Jefferson W. et. al. - 2006
- [11] Advanced Algorithm for control of Photovoltaic systems - C. Liu, B. Wu and R. Cheung
- [12] A new Analog MPPT Technique: TEODI - N. Femia, G. Petrone, G. Spagnuolo, M. Vitelli
- [13] Comprehensive approach to modeling and simulation of Photovoltaic arrays - Marcelo Gradella Villavla, Jones Rafael Gazoli, Ernesto Ruppert Filho
- [14] Power Electronics: Circuits, Devices and Operations (Book) - Muhammad H. Rashid
- [15] Comparison of Photovoltaic array maximum power point tracking technique - Patrick L Chapman, Trishan ESRAM
- [16] Design and simulation of Photovoltaic water pumping system - Akihiro Oi